

## SSB SEALED BEAM LOAD CELL (U.S. & METRIC)

### FEATURES & BENEFITS

- Proprietary Interface temperature compensated strain gages
- Environmentally sealed
- 0.01% non-repeatability
- 0.0008%/°F temp. effect on output
- Tension and compression
- Compact size

### SPECIFICATIONS

CAPACITY	50 - 5K lbf (222 - 22.2K N)	10K lbf (44.5K N)		
<b>ACCURACY – (MAX ERROR)</b>				
Nonlinearity – %FS	±0.03			
Hysteresis – %FS	±0.02	±0.03		
Nonrepeatability – %RO	± 0.01			
Creep, in 20 min – %	± 0.025			
<b>TEMPERATURE</b>				
Compensated Range	°F	0 to +150		
	°C	-15 to +65		
Operating Range	°F	-65 to +200		
	°C	-55 to +90		
Effect on Output – % / deg	°F	±0.0008		
Effect on Zero – %RO / deg	°F	±0.0015		
<b>ELECTRICAL</b>				
Rated Output – mV/V (Nominal)	3.0			
Zero Balance – %RO	±1.0			
Bridge Resistance – Ohm (Nominal)	350			
Excitation Voltage – VDC MAX	15			
Insulation Resistance – Megohm	5000			
<b>MECHANICAL</b>				
Calibration	Compression			
Safe Overload – %CAP	±150			
<b>NATURAL FREQUENCY/DEFLECTION</b>				
lbf	N	Deflection		Nat. Freq. (Hz)
		in	mm	
50	222	0.004	0.1016	2130
100	445	0.004	0.1016	2400
250	1.11K	0.005	0.127	3000
500	2.22K	0.010	0.254	2220
1K	4.45K	0.013	0.3302	1970
2.5K	11.1K	0.025	0.635	1720
5K	22.2K	0.022	0.5588	1400
10K	44.5K	0.026	0.6604	1620
Material	50 - 2.5K lbf	Aluminum		
	222 - 11.1K N			
	5K - 10K lbf	Alloy Steel		
	22.2K - 44.5K N			

### STANDARD CONFIGURATION



Model SSB-500 (Shown)

### OPTIONS

- Standardized output
- Cable length
- Transducer Electronic Data Sheet (TEDS)
- Special temperature range (250° F MAX)
- Custom calibration
- Add connector to cable

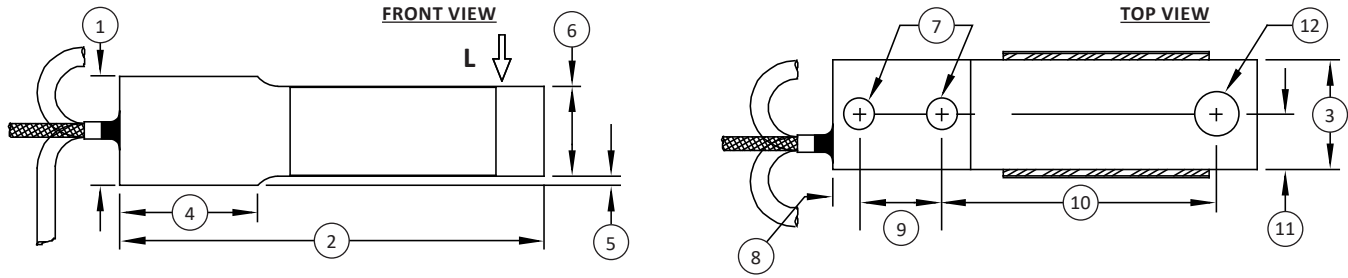
### ACCESSORIES

- Instrumentation

### CONNECTOR OPTIONS

- 10 ft (3 m) integral cable

## SSB SEALED BEAM LOAD CELL (U.S. & METRIC)

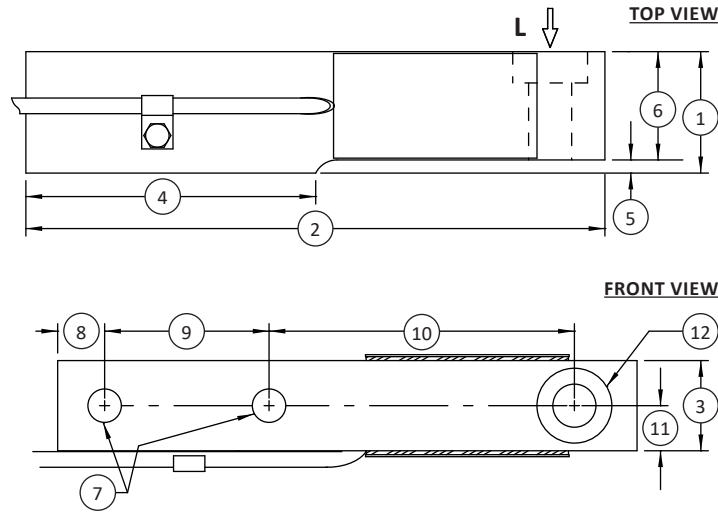


Notes:  
\* L indicates load direction

### DIMENSIONS

See Drawing	CAPACITY									
	U.S. (lbf)	Metric (N)	U.S. (lbf)	Metric (N)	U.S. (lbf)	Metric (N)	U.S. (lbf)	Metric (N)	U.S. (lbf)	Metric (N)
	50, 100, 250	222, 445, 1.11K	500	2.22K	1K	4.45K	2.5K, 5K	11.1K, 22.2K	10K	44.5K
	in	mm	in	mm	in	mm	in	mm	in	mm
(1)	0.98	24.9	1.00	25.4	1.50	38.1	1.45	36.8	1.94	49.3
(2)	2.38	60.5	3.88	98.6	5.00	127	8.0	203.0	9.25	235.0
(3)	0.50	12.7	1.00	25.4	1.00	25.4	1.44	36.6	1.44	36.6
(4)	0.97	24.6	1.25	31.8	1.75	44.5	3.75	95.0	4.63	117.6
(5)	0.11	2.8	0.09	2.3	0.10	2.5	0.10	2.5	0.21	5.3
(6)	0.82	20.8	0.82	20.8	1.36	34.5	1.35	34.3	1.73	43.9
(7)	∅0.17	∅4.3	∅0.28	∅7.1	∅0.41	∅10.3	2x ∅0.53	2x ∅13.6	2x ∅0.53	2x ∅13.6
(8)	0.25	6.4	0.25	6.4	0.38	9.7	0.75	19.0	0.75	19.1
(9)	0.50	12.7	0.75	19.1	1.00	25.4	2.50	63.5	2.63	66.7
(10)	1.31	33.3	2.50	63.5	3.25	82.6	3.88	98.6	4.88	123.8
(11)	0.25	6.4	0.50	12.7	0.50	12.7	0.72	18.3	0.72	18.3
(12)	∅0.17	∅4.3	∅0.40	∅10.2	∅0.40	∅10.2	∅0.69	∅17.5	∅0.69 THRU ALL ⊥ ∅1.20 ↓ 0.50	∅17.5 THRU ALL ⊥ ∅130.4 ↓ 12.7

## SSB SEALED BEAM LOAD CELL (U.S. & METRIC)



**Notes:**  
\* L indicates load direction

### DIMENSIONS (CONTINUED)

See Drawing	CAPACITY			
	U.S. (lbf)	Metric (N)	U.S. (lbf)	Metric (N)
	2.5K - 5K	11.1K - 22.2K	10K	44.5K
	in	mm	in	mm
(1)	1.45	36.8	1.94	49.3
(2)	8.00	203.0	9.25	235.0
(3)	1.44	36.6	1.44	36.6
(4)	3.75	95.0	4.63	117.0
(5)	0.10	2.5	0.21	5.3
(6)	1.35	34.3	1.73	44
(7)	Ø0.53	Ø13.0	Ø0.53	Ø13.5
(8)	0.75	19.0	0.75	19.0
(9)	2.50	63.5	2.63	66.8
(10)	3.88	98.6	4.88	124.0
(11)	0.72	18.3	0.72	18.3
(12)	Ø0.69	Ø17.5	Ø0.69	Ø17.5