

## LBS MINIATURE COMPRESSION LOAD BUTTON (U.S. & METRIC)

### FEATURES & BENEFITS

- Capacities from 5 to 1K lbf (0.02 to 4.45 kN)
- Temperature compensated
- Integral load button
- Small diameter
- From 0.12 inch (3 mm) height

### SPECIFICATIONS

ACCURACY – (MAX ERROR)		
Nonlinearity – %FS		±0.50
Hysteresis – %FS		±0.50
Non-repeatability – %RO		±0.10
TEMPERATURE		
Compensated Range	°F	+60 to +160
	°C	+15 to +71
Operating Range	°F	-65 to +250
	°C	-54 to +121
Effect on Zero – %RO / °F MAX		±0.005
Zero Balance – %FS		±2.0
ELECTRICAL		
Rated Output – mV/V (Nominal)		2.0
Bridge Resistance – Ohm (Nominal)		350
Excitation Voltage – VDC		5
Excitation Voltage – VDC MAX		7
MECHANICAL		
Calibration		Compression
Deflection		0.001 - 0.003
Safe Overload – %CAP		150
Ultimate Overload % of CAP		300
Weight	lbs	0.5
	kg	0.23
Material		Stainless steel

### OPTIONS

- Custom calibration
- Add connector to cable
- Transducer Electronic Data Sheet (TEDS)

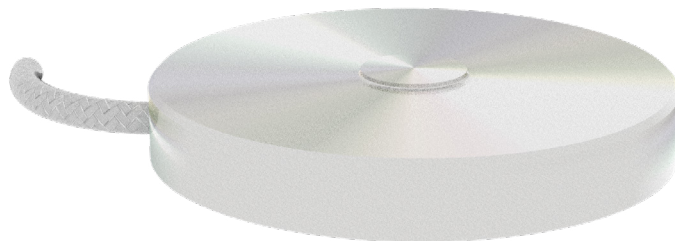
### ACCESSORIES

- Instrumentation

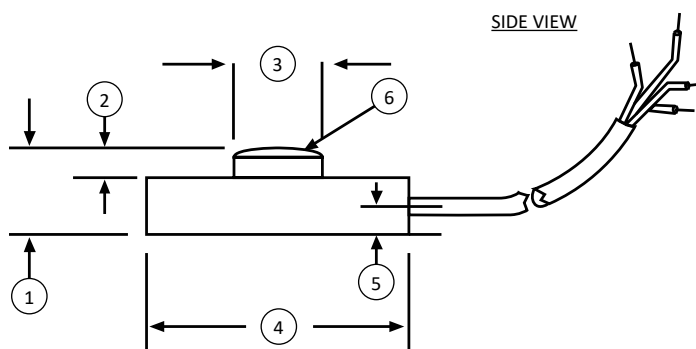
### CONNECTOR OPTIONS

- 5 ft (1.5 m) integral cable

### STANDARD CONFIGURATION



Model LBS (Shown)



### DIMENSIONS

See Drawing	CAPACITY					
	U.S. (lbf)	Metric (kN)	U.S. (lbf)	Metric (kN)	U.S. (lbf)	Metric (kN)
	5, 10, 25, 50	0.02, 0.04, 0.11, 0.22	100, 250	0.44, 1.11	500, 1K	2.22, 4.45
	in	mm	in	mm	in	mm
(1)	0.12	3.00	0.15	3.80	0.25	6.4
(2)	0.03	0.80	0.02	0.50	0.03	0.80
(3)	0.09	2.20	0.12	3.00	0.24	6.10
(4)	0.38	9.60	0.50	13.0	0.75	19.0
(5)	0.04	1.00	0.06	1.50	0.10	2.50
(6)	Spherical radius					