

## MOUNTING PLATES FOR LOW PROFILE™ LOAD CELLS (U.S. & METRIC)

### FEATURES & BENEFITS

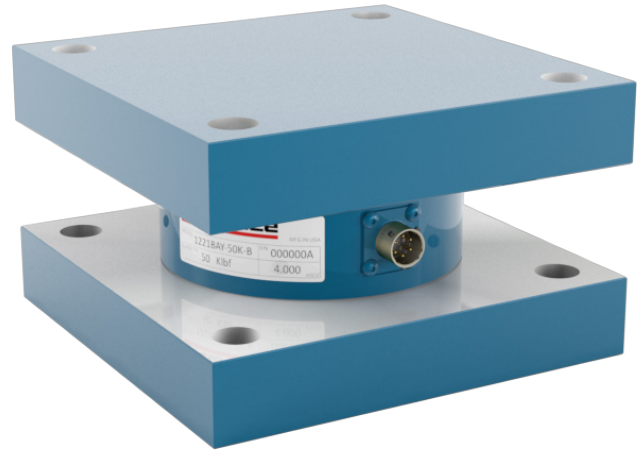
- Distributes the load over the foundation of the supporting structure
- Provides a prepared surface for the load cell
- Eliminates the requirement for expansion assemblies in most installations

### Mounting Plates for Low Profile™ Load Cells

The installation of a compression load cell under a weigh bridge, tank, or other structure normally requires that mounting plates be used. The bottom plate, ground flat to 0.0002 T.I.R. to mate with the load cell and fabricated of mild steel, distributes the load over the foundation or supporting structure and provides a prepared surface for the load cell.

The top plate distributes the load to the weighing structure and provides a hard (R<sub>c</sub>45) surface for the load button. The top plate will move on the button due to thermal expansion, load shifting, wind loading, and other side loads. The high side load capacity of the Interface load cell eliminates the requirement for expansion assemblies in most installations. Mounting plates are suitable for compression loads only; they will not properly support a universal load cell used in tension.

### STANDARD CONFIGURATION



Models TP-102 & BP-102 with 1221BAY-50K (Shown)



Models BP-102-3 with 1221BAY-50K-B (Shown)

### SPECIFICATIONS

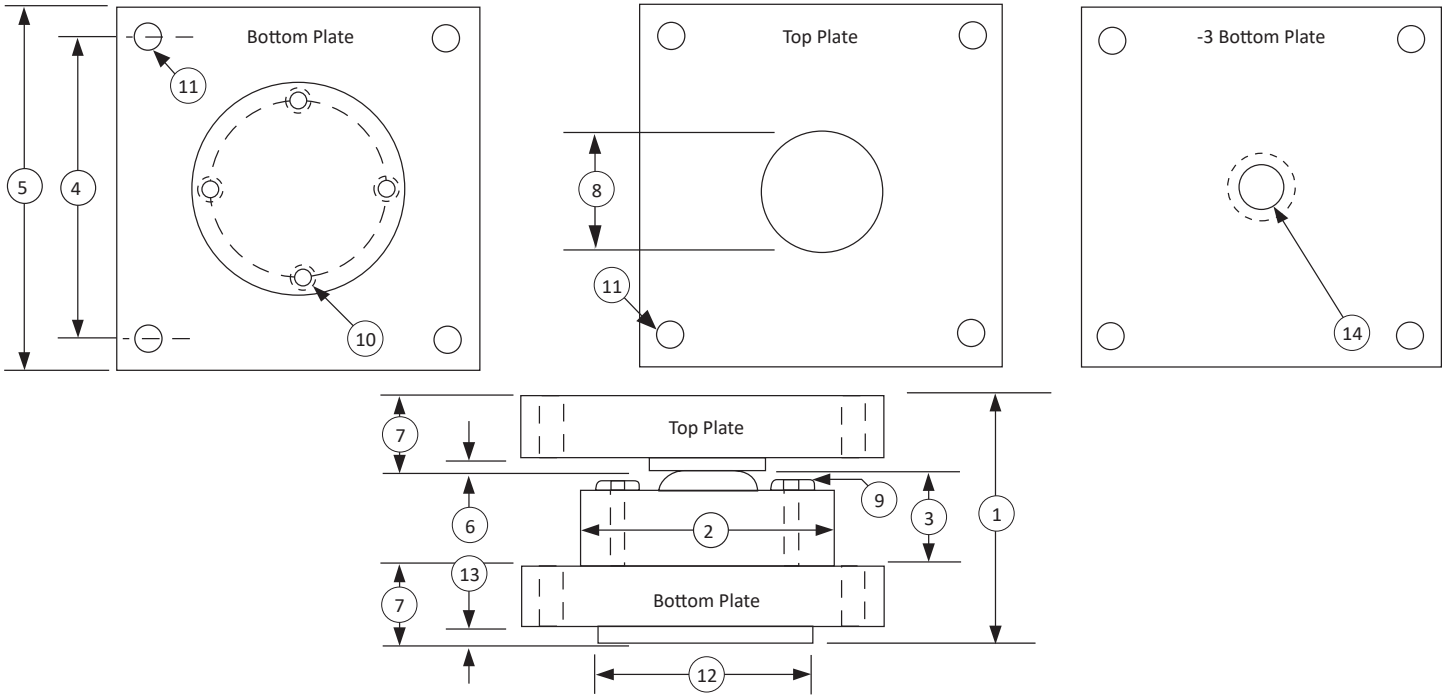
MECHANICAL		
Model	TP-101, BP-101	TP-301, BP-308
	TP-101, BP-108	TP-302, BP-302
	TP-102, BP-102	TP-303, BP-303
	TP-103, BP-103	
	TP-104, BP-104	
Material	Heat Treated steel	Stainless steel

### BASE PLATE OPTIONS

Add the dash number after the basic part number of bottom plate to specify exact configuration of the plate and type of mounting screws supplied in the kit.			
Dash #	Description	Pad	Usage
-3	Single threaded stud in center	No	Load cell with base installed
-11	Tapped holes and hex head cap screws	Yes	Uncounterbored load cell
-12	Tapped holes and socket head cap screws	Yes	Counterbored load cell
-21	Tapped holes and hex head cap screws	No	Uncounterbored load cell
-22	Tapped holes and socket head cap screws	No	Counterbored load cell

Metric dimensions and capacities are provided for conversion only. Standard product will be sold in lbf and U.S. dimensions. Metric capacities available upon special request and at an additional cost. For mounting plates that fit metric load cells, please contact an application engineer.

## MOUNTING PLATES FOR LOW PROFILE™ LOAD CELLS (U.S. & METRIC)



### DIMENSIONS

MODEL	TP-101, BP-101		TP-101, BP-108		TP-102, BP-102		TP-103, BP-103		TP-104, BP-104		TP-301, BP-308		TP-302, BP-302		TP-303, BP-303	
	U.S. (lbf)	Metric (kN)	U.S. (lbf)	Metric (kN)	U.S. (lbf)	Metric (kN)	U.S. (lbf)	Metric (kN)	U.S. (lbf)	Metric (kN)	U.S. (lbf)	Metric (kN)	U.S. (lbf)	Metric (kN)	U.S. (lbf)	Metric (kN)
	1K, 2K	5, 10	5K, 10K	25, 50	25K, 50K	125, 250	100K	450	200K	900	5K, 10K	25, 50	25K, 50K	125, 250	100K	450
L/C Range	in	mm	in	mm	in	mm	in	mm	in	mm	in	mm	in	mm	in	mm
(1)	3.62	91.9	3.62	91.9	4.25	108.0	5.25	113.4	8.25	209.6	3.49	88.6	4.25	108.0	5.25	133.4
(2)	4.12	104.6	4.12	104.6	4.75	120.7	7.50	190.5	8.25	209.6	4.12	104.6	4.75	120.7	7.50	190.5
(3)	1.37	34.8	1.37	34.8	1.75	44.5	2.25	57.2	3.25	82.6	1.37	34.8	1.75	44.5	2.25	57.2
(4)	5.0	127	5.0	127	5.5	140	6.5	165	8.0	203	5.0	127	5.5	140	6.5	165
(5)	6	152	6	152	7	178	8	203	10	254	6	152	7	178	8	203
(6)	0.25	6.4	0.25	6.4	0.25	6.4	0.25	6.4	0.37	9.4	0.12	3.0	0.25	6.4	0.25	6.4
(7)	1.12	28.4	1.12	28.4	1.25	31.8	1.50	38.1	2.50	63.5	1.12	28.4	1.25	31.8	1.50	38.1
(8)	2.00	50.8	2.00	50.8	2.25	57.2	2.75	69.9	4.00	101.6	1.9	48	1.9	48	1.9	48
(9)	¼-20 to 1 ½		¼-20 X 1-½		⅝-18 X 2		⅝-20 X 2-½		⅝-11 X 3 ¾		¼-20 X 1-½		⅝-18 X 2		⅝-20 X 2-½	
(10)	¼-20		¼-20		⅝-18		⅝-20		⅝-11		¼-20		⅝-18		⅝-20	
	8 Places		8 Places		4 Places		12 Places		12 Places		8 Places		4 Places		12 Places	
	3.50	88.9	3.50	88.9	4.00	101.6	6.25	158.8	6.75	171.5	3.50	88.9	4.00	101.6	6.25	158.8
(11)	↓ Ø0.56	↓ Ø14.2	↓ Ø0.56	↓ Ø14.2	↓ Ø0.69	↓ Ø17.5	↓ Ø0.69	↓ Ø17.5	↓ Ø0.69	↓ Ø17.5	↓ Ø0.56	↓ Ø14.2	↓ Ø0.69	↓ Ø17.5	↓ Ø0.69	↓ Ø17.5
(12)	3.00	76.2	3.00	76.2	3.50	88.9	4.00	101.6	8.25	209.6	3.00	76.2	3.50	88.9	4.00	101.6
(13)	0.03 TYP	0.8 TYP	0.03 TYP	0.8 TYP	0.03 TYP	0.8 TYP	0.03 TYP	0.8 TYP	0.03 TYP	0.8 TYP	0.03 TYP	0.8 TYP	0.03 TYP	0.8 TYP	0.03 TYP	0.8 TYP
(14)	⅝-18 UNF-3B		⅝-18 UNF-3B		½-20 UNF-3B		1 ¼-12 UNF-3B		¾-16 UNF-3B		⅝-18 UNF-3B		½-20 UNF-3B		1 ¼-12 UNF-3B	
	0.87	22.1	0.87	22.1	0.88	22.4	1.75	44.5	1.50	38.1	0.87	22.1	0.88	22.4	1.75	44.5

Datasheet TP & BP v2.3 06-30-2020

Metric dimensions and capacities are provided for conversion only. Standard product will be sold in lbf and U.S. dimensions. Metric capacities available upon special request and at an additional cost. For mounting plates that fit metric load cells, please contact an application engineer.