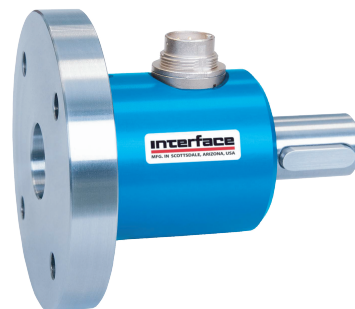


Model TS18 Shaft to Flange Style Reaction Torque Transducer

Why the Interface model TS18 Shaft to Flange Style Torque Transducer is the best in class:

- Capacities from 5 to 2K Nm (44.3 to 17.7K lbf-in)
- Keyed shaft per DIN 6885.1
- Convenient flange mounting



TS18 Shaft to Flange Style Reaction Torque Transducer

TS18 Shaft to Flange Style Reaction Torque Transducer - Capacities 5 to 1,000 Nm

OPTIONS

100 % Control Signal (RCAL)
Combined Error 0.1% FS

SPECIFICATIONS

ACCURACY – (MAX ERROR)

Combined Error-% FS±0.2
Nonrepeatability-%±0.02

TEMPERATURE

Effect on Zero-% RO/°C±0.02
Effect on Output-%/°C±0.01
Rated Range-°C-5 to +45
Operating Range-°C-15 to +55

ELECTRICAL

Output-mV/V1
Excitation Voltage-VDC MAX12
Bridge Resistance-Ohm350
Electrical Connection6-pin binder

MECHANICAL

Safe Overload-% RO150
Angular Deflection @ Rated Torque°<0.2
Cyclic Load Rating-% RO.....±70 peak

DIMENSIONS

Nominal Torque										
Capacity (Nm)	5, 10, 25		50, 100		200,500		1K		2K	
Equivalent (lb-in)	44.3, 88.5, 211		443, 885		1.77K, 4.43K		8.85K		17.7K	
	inch	mm	inch	mm	inch	mm	inch	mm	inch	mm
①	2.75	70	3.54	90	4.72	120	5.51	140	6.50	165
②	0.39	10	0.47	12	0.59	15	0.59	15	0.79	20
③	0.59	15	1.10	28	1.97	50	2.75	70	3.54	90
④	2.75	70	3.15	80	3.93	100	4.72	120	5.91	150
⑤	1.97	50	2.36	60	3.15	80	3.93	100	4.72	120
⑥	0.47	12	0.71	18	1.18	30	1.57	40	2.76	70
⑦	4x90°		4x90°		6x60°		6x60°		8x45°	
⑧	0.22	5.5	0.26	6.6	0.35	9	0.43	11	0.51	13
⑨	1.42	36	1.61	41	1.69	43	1.61	41	1.81	46
⑩	1.57	40	1.77	45	2.28	58	2.56	65	3.74	95

