

# Model TS14 Square Drive Reaction Torque Transducer

Why the Interface model TS14 Square Drive Reaction Torque Transducer is the best in class:

- Capacities from 2 to 5K Nm (17.7 to 44.2 lbf-in)
- Simple operation - no moving parts
- Useful for auditing fastener torques
- Fits standard socket wrenches



TS14 Square Drive Reaction Torque Transducer

## OPTIONS

100 % Control Signal (RCAL)  
 Combined Error 0.1% FS

## SPECIFICATIONS

### ACCURACY – (MAX ERROR)

Combined Error-% FS .....±0.2  
 Nonrepeatability-% .....±0.02

### TEMPERATURE

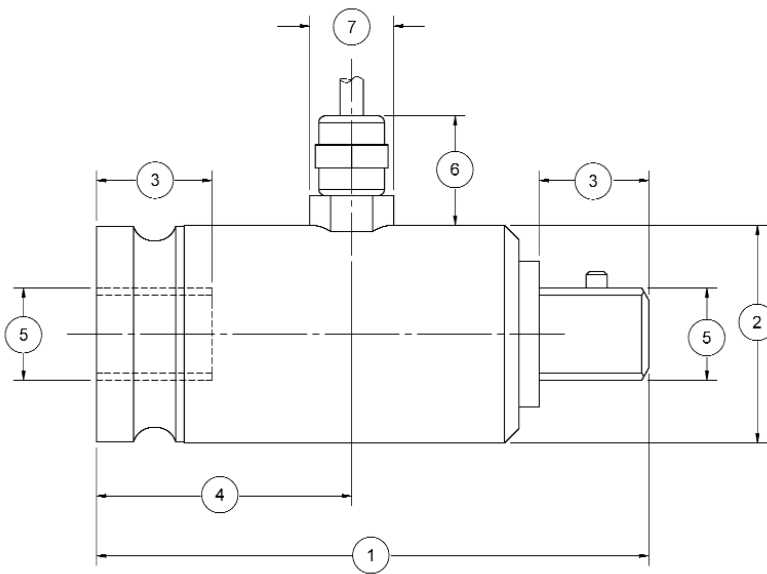
Effect on Zero-% RO/°C .....±0.02  
 Effect on Output-%/°C .....±0.01  
 Rated Range-°C .....-5 to +45  
 Operating Range-°C .....-15 to +55

### ELECTRICAL

Output-mV/V .....1  
 Excitation Voltage-VDC MAX .....12  
 Bridge Resistance-Ohm .....350  
 Cable Length-m .....3

### MECHANICAL

Safe Overload-% RO .....150  
 Cyclic Load Rating-% RO .....±70 peak



TS14 Square Drive Reaction Torque Transducer - Capacities 2 to 5,000 Nm

## DIMENSIONS

Nominal Torque												
Capacity (Nm)	2, 5, 12		25, 63		100, 160		250, 500		1K		2K, 5K	
Equivalent (lb-in)	17.7, 44.3, 106		221, 560		885, 1.41K		2.2K, 4.42K		8.85K		17.7K, 44.3K	
	inch	mm	inch	mm	inch	mm	inch	mm	inch	mm	inch	mm
①	2.52	64	2.80	71	2.99	76	3.94	100	5.20	132	9.84	250
②	0.59	15	1.18	30	1.18	30	1.93	49	1.93	49	3.94	100
③	0.28	7.2	0.41	10.4	0.59	15.1	0.89	22.6	1.08	27.4	1.55	39.3
④	0.89	22.7	1.36	34.6	1.38	35.1	1.81	46	2.36	60	4.72	120
⑤	1/4"	6.35	3/8"	9.53	1/2"	12.7	3/4"	19.05	1"	25.4	1 1/2"	38.1
⑥	0.39	10	0.59	15	0.59	15	0.59	15	0.59	15	2.17	55
⑦	0.39	10	0.39	10	0.39	10	0.39	10	0.39	10	0.75	19